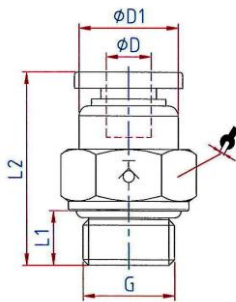
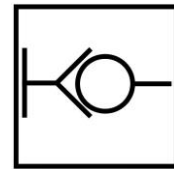


Functional principle of a coupling: The compressed air supply is completely shut off as soon as the hose is detached from the connector.

Flow is only guaranteed when the hose is firmly inserted.

Attention: Only release the hose without pressure and hold the end of the hose to the plug connection when loosening to prevent injuries from the "whip effect"!

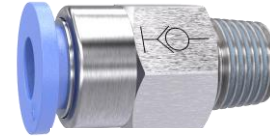
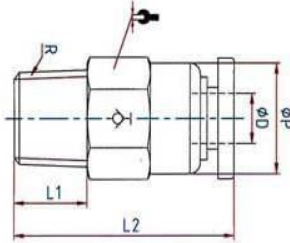
Material	Plastic and nickel-plated brass
Working pressure	0 - 10 bar
Temperature range	0 °C to 60 °C
Medium	Compressed air
Recommended hose	PU or PA (nylon)



195.186-2

Straight stop valve, parallel male thread with O-ring (NBR)

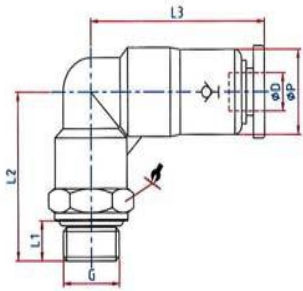
Art. No.	Type No.	Thread	For tube O.D. mm	L1 mm	L2 mm	a/f mm	Ø D1 mm	Sleeve	Standard thread
151439	195.184-2	G 1/8	4	5.5	24.5	12	10.0	Plastic blue	DIN EN ISO 228-1
151440	195.186-2	G 1/8	6	5.5	27.5	14	12.0	Plastic blue	DIN EN ISO 228-1
151441	195.188-2	G 1/8	8	5.5	31.5	14	14.0	Plastic blue	DIN EN ISO 228-1
151442	195.146-2	G 1/4	6	6.5	27.5	14	12.0	Plastic blue	DIN EN ISO 228-1
151443	195.148-2	G 1/4	8	6.5	33.5	14	14.0	Plastic blue	DIN EN ISO 228-1
151444	195.1410-2	G 1/4	10	6.5	35.0	17	17.0	Plastic blue	DIN EN ISO 228-1
151445	195.388-2	G 3/8	8	7.0	33.5	17	14.0	Plastic blue	DIN EN ISO 228-1
151446	195.3810-2	G 3/8	10	7.0	35.0	20	17.0	Plastic blue	DIN EN ISO 228-1
151447	195.3812-2	G 3/8	12	7.0	36.5	21	20.5	Plastic blue	DIN EN ISO 228-1
151448	195.1210-2	G 1/2	10	10.0	35.0	19	17.0	Plastic blue	DIN EN ISO 228-1
151449	195.1212-2	G 1/2	12	10.0	36.5	21	20.5	Plastic blue	DIN EN ISO 228-1



196.186-2

Straight stop valve, conical male thread, coated

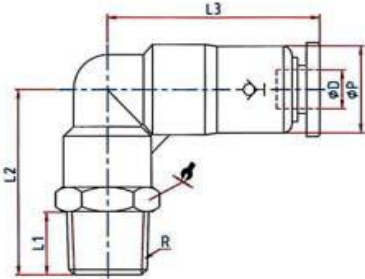
Art. No.	Type No.	Thread	For tube O.D. mm	L1 mm	L2 mm	a/f mm	Ø p mm	Sleeve	Standard thread
151450	196.184-2	R 1/8	4	7.5	24.5	10	10.0	Plastic blue	ISO 7-1
151451	196.186-2	R 1/8	6	7.5	27.5	12	12.0	Plastic blue	ISO 7-1
151452	196.188-2	R 1/8	8	7.5	31.5	14	14.0	Plastic blue	ISO 7-1
151453	196.146-2	R 1/4	6	10.0	27.5	14	12.0	Plastic blue	ISO 7-1
151454	196.148-2	R 1/4	8	10.0	33.5	14	14.0	Plastic blue	ISO 7-1
151455	196.1410-2	R 1/4	10	10.0	35.0	17	17.0	Plastic blue	ISO 7-1
151456	196.388-2	R 3/8	8	10.5	33.5	17	14.0	Plastic blue	ISO 7-1
151457	196.3810-2	R 3/8	10	10.5	35.0	17	17.0	Plastic blue	ISO 7-1
151458	196.3812-2	R 3/8	12	10.5	36.5	21	20.5	Plastic blue	ISO 7-1
151459	196.1210-2	R 1/2	10	13.5	35.0	21	17.0	Plastic blue	ISO 7-1
151460	196.1212-2	R 1/2	12	13.5	36.5	21	20.5	Plastic blue	ISO 7-1



197.186-2

Angle stop valve, swivel type, parallel male thread with O-ring (NBR)

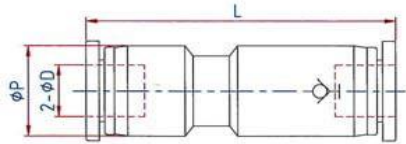
Art. No.	Type No.	Thread	For tube O.D. mm	L1 mm	L2 mm	L3 mm	a/f mm	Ø P mm	Sleeve	Standard thread
151461	197.54-2	M5	4	3.5	18.5	31.0	12	10.5	Plastic blue	DIN 13-1
151462	197.56-2	M5	6	3.5	19.5	32.5	12	13.0	Plastic blue	DIN 13-1
151463	197.184-2	G 1/8	4	5.5	21.0	31.0	14	10.5	Plastic blue	DIN EN ISO 228-1
151464	197.186-2	G 1/8	6	5.5	22.0	32.5	14	13.0	Plastic blue	DIN EN ISO 228-1
151465	197.188-2	G 1/8	8	5.5	24.5	39.5	14	14.0	Plastic blue	DIN EN ISO 228-1
151466	197.146-2	G 1/4	6	6.5	23.0	32.5	17	13.0	Plastic blue	DIN EN ISO 228-1
151467	197.148-2	G 1/4	8	6.5	25.5	39.5	17	14.0	Plastic blue	DIN EN ISO 228-1
151468	197.1410-2	G 1/4	10	6.5	27.5	45.0	17	18.0	Plastic blue	DIN EN ISO 228-1
151469	197.388-2	G 3/8	8	7.5	27.5	39.5	20	14.0	Plastic blue	DIN EN ISO 228-1
151470	197.3810-2	G 3/8	10	7.5	29.5	45.0	20	18.0	Plastic blue	DIN EN ISO 228-1
151471	197.3812-2	G 3/8	12	7.5	30.0	47.0	20	20.5	Plastic blue	DIN EN ISO 228-1
151472	197.1210-2	G 1/2	10	10.0	32.0	45.0	24	18.0	Plastic blue	DIN EN ISO 228-1
151473	197.1212-2	G 1/2	12	10.0	32.5	47.0	24	20.5	Plastic blue	DIN EN ISO 228-1



198.186-2

Angle stop valve, swivel type, conical male thread, coated

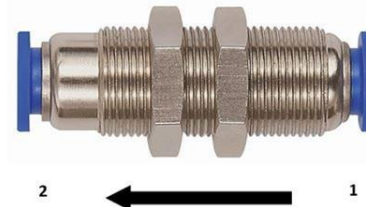
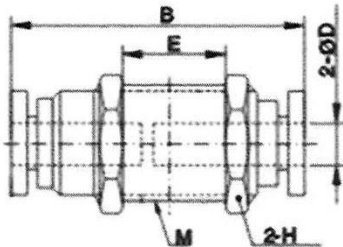
Art. No.	Type No.	Thread	For tube O.D. mm	L1 mm	L2 mm	L3 mm	a/f mm	Ø P mm	Sleeve	Standard thread
151474	198.184-2	R 1/8	4	7.5	21.0	31.0	12	10.0	Plastic blue	ISO 7-1
151475	198.186-2	R 1/8	6	7.5	22.0	32.5	12	12.0	Plastic blue	ISO 7-1
151476	198.188-2	R 1/8	8	7.5	25.0	39.5	14	14.0	Plastic blue	ISO 7-1
151477	198.146-2	R 1/4	6	10.0	25.0	32.5	14	12.0	Plastic blue	ISO 7-1
151478	198.148-2	R 1/4	8	10.0	27.5	39.5	14	14.0	Plastic blue	ISO 7-1
151479	198.1410-2	R 1/4	10	10.0	30.0	45.0	17	17.0	Plastic blue	ISO 7-1
151480	198.388-2	R 3/8	8	10.5	28.5	39.5	17	14.5	Plastic blue	ISO 7-1
151481	198.3810-2	R 3/8	10	10.5	30.5	45.0	17	17.0	Plastic blue	ISO 7-1
151482	198.3812-2	R 3/8	12	10.5	31.0	47.0	17	18.8	Plastic blue	ISO 7-1
151483	198.1210-2	R 1/2	10	13.5	34.0	45.0	21	17.0	Plastic blue	ISO 7-1
151484	198.1212-2	R 1/2	12	13.5	34.5	47.0	21	18.8	Plastic blue	ISO 7-1



199.06-2

Stop union

Art. No.	Type No.	For tube O.D. mm	L2 mm	∅ P mm	Sleeve
151485	199.04-2	4	46.0	10.5	Plastic blue
151486	199.06-2	6	48.0	13.0	Plastic blue
151487	199.08-2	8	56.0	14.0	Plastic blue
151488	199.10-2	10	61.0	18.0	Plastic blue
151489	199.12-2	12	66.0	20.5	Plastic blue



230.016-8

Female bulkhead stop union

Art. No.	Type No.	∅D mm	Thread	E mm	B mm	H mm
110211	230.012-4	4	M12x1.0	24.4	43.4	14
110212	230.014-6	6	M14x1	24.3	47.2	17
110213	230.016-8	8	M16x1.0	25.3	50.8	19
110214	230.020-10	10	M20x1.5	29.6	58.5	24
110215	230.024-12	12	M22x1.0	38.6	68.7	27

Pay attention to the correct installation! Flow direction from 1 (external thread on the body) to 2 (no external thread on the body) results in the desired stop function when removing the hose from 2! Flow in the opposite direction is possible, but without a stop function.